

TRADE : FITTER-Sr.**MONTHLY TEST : WEEK NO. 13 TO 16**DATE : SEAT NO : **TOTAL MARKS : 100 TIME : 2 Hrs. PAPER-I****TRADE CODE : 453****Note : Attempt all the questions. All questions carry equal marks****1. Clearance or minute gap between two mating parts is measured by -----.**

- A) Ring Gauge B) Caliper Gauge
C) Feeler Gauge D) Centre Gauge

2. Feeler gauge is also known as -----.

- A) Caliper Gauge B) Thickness Gauge
C) Hole Gauge D) Gap Gauge

3. How many blades of different thickness consisted in the feeler gauge of set No.4 as per Indian Standard ?

- A) 13
B) 09
C) 10
B) 14

4. The gauges used for checking internal and external radius of workpieces is known as —

- A) Thickness Gauge B) Feeler Gauge
C) Radius Gauge D) Small hole gauge

5. Small hole gauges are available in sets -----.

- A) 4 Numbers B) 5 Numbers
C) 6 Numbers D) 7 Numbers

6. Small hole gauge is -----.

- A) Direct measuring Instrument
B) Indirect measuring Instrument
C) Non reading Instrument
D) None of the above

7. Which among the following gauge is used for checking large internal diameters ?

- A) Plug gauge B) Telescopic gauge
C) Small hole gauge D) None of the above

8. The other name for plungers of telescopic gauge is -----.

- A) Handle B) Fixed leg
C) Measuring Face D) Telescopic leg

9. This is required for accuracy while using feeler gauges -----.

- A) Good Sense of feel
B) Mating parts
C) Blades having various thickness
B) All the above

10. Which among the following gauge is used for measuring the size of smaller hole and slots ?

- A) Plug Gauge B) Telescopic Gauge
C) Small hole gauge D) Any of the above

11. Which among the following is the range of telescopic gauge set No. 5 ?

- A) 12.7 mm to 19 mm B) 31.7 mm to 53.9 mm
C) 53.9 mm to 88.9 mm D) 88.9 mm to 152.4 mm

12. In the small hole gauge if handle is rotated in clockwise direction the plunger -----.

- A) Moves forward up
B) Moves Backward
C) Rotates anticlockwise direction
D) Does not have any movement

13. Which bearing material is used for light loading and low speed application?

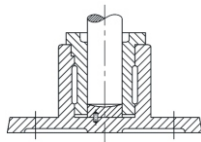
- A) Cast iron
- B) Tin bronze
- C) Cadmium based alloy
- D) Copper and lead alloys

14. Which alloying metal bearing can work at higher temperature and higher load carrying capacity?

- A) Cast iron
- B) White metal
- C) Copper lead alloys
- D) Cadmium based alloy

15. What is the name of bearing?

- A) Ball bearing
- B) Roller bearing
- C) Thrust bearing
- D) Journal bearing



16. Which part of ball bearing do not rotate along the bearing assembly?

- A) Ball cage
- B) Inner race
- C) Outer race
- D) Rolling elements

17. What is the disadvantage of thrust ball bearing?

- A) Cannot take any radial load
- B) Cannot take horizontal end thrust
- C) Cannot take load on both directions
- D) Cannot take any vertical thrust load

18. When the load is perpendicular to bearing axis, it is called as -----.

- A) Radial or journal bearing
- B) Thrust bearing
- C) Needle bearing
- D) Roller bearing

19. Which of the following is not a use of bearing ?

- A) Allow the shaft to run freely
- B) To restrain moving elements
- C) The support and hold the job in fixed position
- D) To increase friction between parts

20. What is the purpose of deep groove type of ball races provided in the ball bearing?

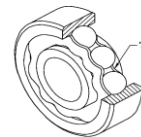
- A) To withstand shock
- B) To carry journal loads
- C) To withstand axial thrust
- D) To withstand radial load

21. Which corrosion resistant metal used in chemical plant and food processing?

- A) Stainless Steel
- B) Lead
- C) Copper
- D) Aluminium

22. What is the name of the part marked 'x' in the bearing?

- A) Out race
- B) Ball cage
- C) Inner race
- D) Rolling elements



23. How bunching up of rolling elements avoided in the bearing assembly?

- A) By cage
- B) By grooves
- C) By out race
- D) By inner race

24. Why deep groove type of ball races provided in the ball bearing?

- A) Withstand shock
- B) Withstand axial thrust
- C) Withstand radial load
- D) Carry journal loads

25. Which bearing material has got low coefficient of friction and high material cost?

- A) Nylon
- B) Teflon
- C) Thrust ball bearing
- D) Laminated phenolics

26. Which type of plain bearing can adjust itself for slight angular misalignment or deflection ?

- A) Solid bearing
- B) Split bearing
- C) Self aligning bush bearing
- D) Adjustable slide bearing

27. In shrinkage fit of bearings, any part of bearing should not be heated more than -----.

- A) 50 °C
- B) 100 °C
- C) 200 °C
- D) 140 °C

28. In assembly journal is rotating member, the outer race and housing will have -----.

- A) Close push fit
- B) Interference fit
- C) Clearance fit
- D) Running fit

29. The bearing space in housing is limited. Which type of bearings are used ?

- A) Thrust ball bearing
- B) Roller bearing
- C) Needle bearing
- D) Ball bearings

30. Which type of bearing is used in restricted outside diameter of the bearing?

- A) Needle bearing
- B) Thrust ball bearing
- C) Angular contact ball bearing
- D) Self aligned ball bearing

31. The defect caused due to too high clearance and inadequate lubrication in plain bearing is

- A) Bearing runs hot
- B) Pounding
- C) Screeching
- D) Rapid wear

32. Which type of bearing consists of rolling elements, races and cage ?

- A) Anti - friction bearing
- B) Split bearing
- C) Self aligning bush bearing
- D) Adjustable slide bearing

33. Which type of plain bearing are made in halves and assembled in special plumber block ?

- A) Solid bearing
- B) Split bearing
- C) Self aligning bush bearing
- D) Adjustable slide bearing

34. The defect caused due to excessive wear in plain bearing is -----.

- A) Bearing runs hot
- B) Pounding
- C) Screeching
- D) Rapid wear

35. When bearing is to be fit tight on shaft, pressure should be applied on -----.

- A) Outer race
- B) Cage
- C) Inner race
- D) Rolling element

36. In assembly journal is rotating member, the journal and inner race will have -----.

- A) Close push fit
- B) Interference fit
- C) Clearance fit
- D) Running fit

37. Which bearing loading is at right angles to the bearing axis?

- A) Thrust bearing
- B) Journal bearing
- C) Solid bearing
- D) Split bearing

38. Identify the name of bearing metal which are tin based or lead - based -----.

- A) Lead Bronze
- B) Copper Lead Alloy
- C) White Metal
- D) Brass

39. Why the double row roller bearing is used?

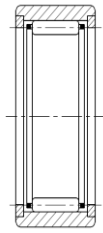
- A) To take axial load
- B) To take radial load
- C) To take heavy axial load
- D) To take heavy radial load

40. If shaft and inner race of bearing has more interference, what is the procedure to make assembly ?

- A) By close push fit
- B) By shrinkage fit
- C) By clearance fit
- D) By running fit

41. What is the name of the bearing?

- A) Needle Bearing
- B) Thrust Ball Bearing
- C) Taper Roller Bearing
- D) Angular Contact Ball Bearing



42. The cause of increase the temperature of bearing is -----.

- A) Viscosity of an Oil is Proper
- B) Viscosity of an Oil is not Proper
- C) Both of the A & B
- D) None of the A & B

43. The strength of this bearing material decreases with rise in temperature -----.

- A) Copper Lead Alloy B) Cast Iron
- C) White Metal D) None of the above

44. Bush bearing is made from -----.

- A) Gun metal/Bronze B) Cast Iron
- C) Aluminium Alloy D) None of the above

45. In bearing assembly, outer race has to be fitted in housing by shrinkage fit. Which part is heated ?

- A) Shaft
- B) Outer race
- C) Housing
- D) Inner race

46. Which among the following bearing metal's bearings works at higher temperature and carry the higher loads ?

- A) Cast Iron
- B) Cadmium Base Alloy
- C) Aluminium Alloy
- D) Lead Bronze

47. Which among the following bearing material is best for hard journals ?

- A) Cast Iron
- B) Nylon
- C) Lead Bronze
- D) Aluminium Alloy

48. Which type of bearing metal have self lubricated?

- A) White metal B) Sintered alloy
- C) Aluminium alloy D) Cadmium based alloy

49. Which bearing material is used in connecting rod and electrical motors?

- A) White metal B) Sintered alloy
- C) Aluminium alloy D) Copper lead alloy

50. The defect caused due to improper lubrication system or lubricant in plain bearing is -----.

- A) Bearing runs hot
- B) Pounding
- C) Screeching
- D) Rapid wear

SCAN ME



www.visionprakashan.com

Month -04

New Syllabus _2022

Sector : Capital Goods And Manufacturing
Annual Pattern 2nd Year NSQF Level- 4
INDUSTRIAL TRAINING INSTITUTE

4.1**TRADE : FITTER-Sr.****MONTHLY TEST : WEEK NO. 13 TO 16**DATE : **PAPER-I**TRADE CODE : **453****TOTAL MARKS : 100****ANSWER KEY****Note : Attempt all the questions. All questions carry equal marks**

Q.No.	ANS
1	C
2	B
3	A
4	C
5	D
6	B
7	B
8	D
9	A
10	C
11	D
12	A
13	A
14	D
15	C
16	B
17	B
18	A
19	D
20	C
21	A
22	B
23	A
24	B
25	B

Q.No.	ANS
26	C
27	D
28	A
29	C
30	A
31	C
32	A
33	B
34	B
35	C
36	B
37	B
38	C
39	D
40	B
41	A
42	B
43	C
44	A
45	C
46	B
47	D
48	B
49	D
50	A